

WEAVER

SAFETY LANE

WY-400 BRAKE TESTER

&

OTHER WY-40 THRU WY-40SA MODELS

PARTS MANUAL

FOR PARTS, PLEASE CONTACT:

Castle EQUIPMENT
COMPANY
 SINCE 1950

TOLL-FREE: 888-274-8490

TELEPHONE: 815-458-6216

FAX: 815-458-9350

E-MAIL: CASTLE@AMERITECH.NET

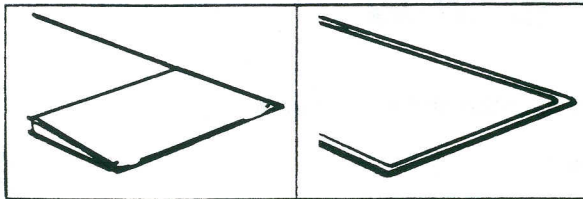
WEBSITE: WWW.CASTLEEQUIPMENT.COM

P.O. Box 3; BRAIDWOOD, IL 60408

Rugged • Accurate • Easy to use

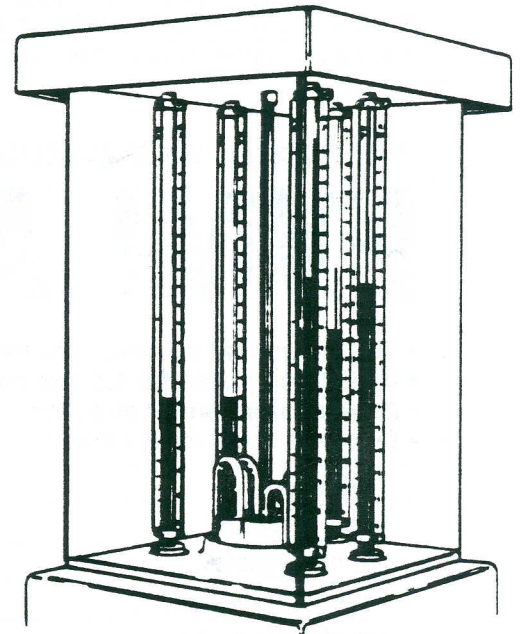
AUTOMATIC BRAKE TESTERS...

The Inspection Lane Standard!

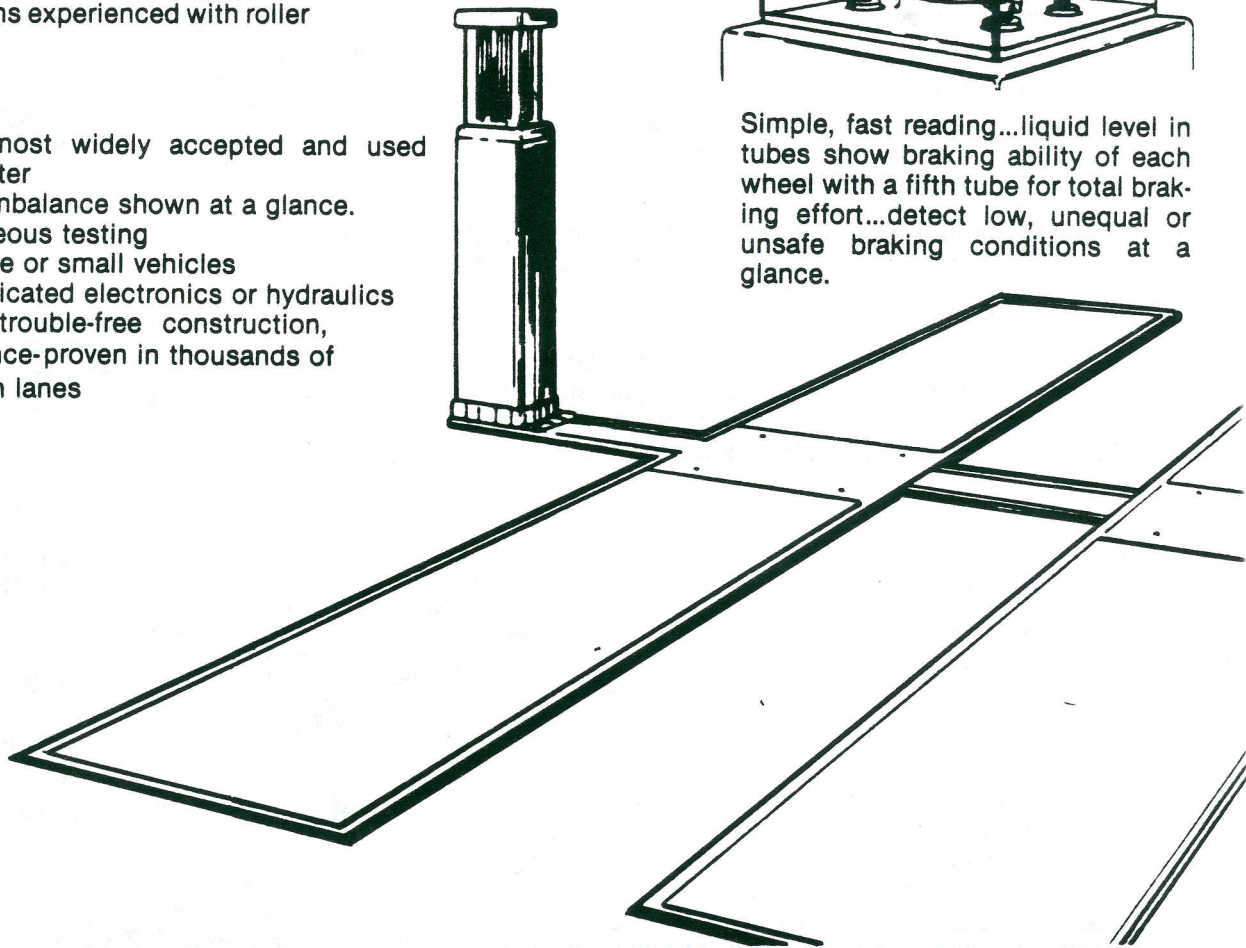


Easily installed surface or flush tread plates minimize the positioning problems experienced with roller systems.

- World's most widely accepted and used brake tester
- Braking imbalance shown at a glance.
- Instantaneous testing
- Tests large or small vehicles
- No complicated electronics or hydraulics
- Rugged, trouble-free construction, performance-proven in thousands of inspection lanes



Simple, fast reading...liquid level in tubes show braking ability of each wheel with a fifth tube for total braking effort...detect low, unequal or unsafe braking conditions at a glance.

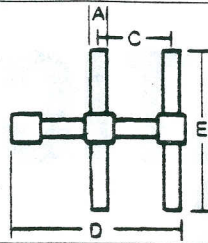


WEAVER®

SPECIFICATIONS

DIMENSIONS

DRIVE-OVER CAPACITY IN LBS. PER VEHICLE END		BRAKE TESTING CAP. EFFORT IN LBS.	
Model	Type	Per Wheel Plate*	Total
WY-400	Surface	32,000	1,500-6,000 6,000-24,000
WY-75	Flush	36,000	1,500-6,000 6,000-24,000
WY-75-36	Flush	36,000	1,500-6,000 6,000-24,000



TREAD PLATE					
Model	Width "A"	Length "B"	Center to Center Spacing "C"	Total Width "D"	Total Length "E"
WY-400	3'0"	12'6"	5'10"	12'11"	28'5"
WY-75	3'0"	12'6"†	5'10"	12'7"	28'8"
WY-75-36	3'0"	15'6"	5'10"	12'11"	34'8"

*Other Braking Effort Capacities in pounds per Vehicle Wheel

†Longer wheelbase vehicles may require extended tread plates.

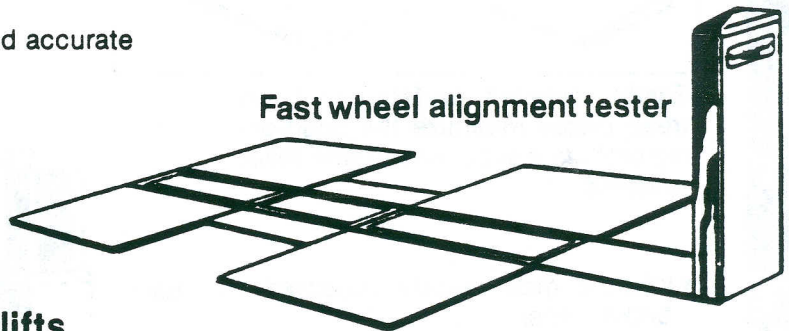
ADDITIONAL WEAVER EQUIPMENT

PVMI Approved

- Flush mounted for fast, automatic operation
- Wide tread plates for full tire pattern contact with any over-the-highway vehicle
- Drive on from either direction
- Eye level scale makes reading easy, fast and accurate

Width, overall	12'5"
Length, overall	4'3-5/8"
Ht. of pedestal	4'10"
Tread plate length	4'0"
Tread plate width	3'0"
Tread plate C. to C.	5'10"

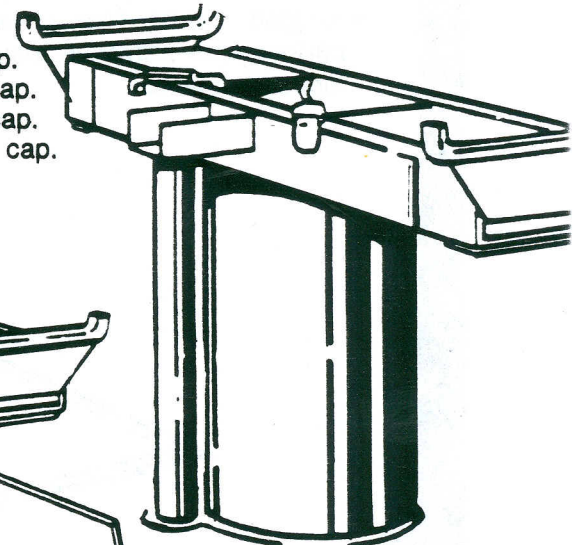
Fast wheel alignment tester



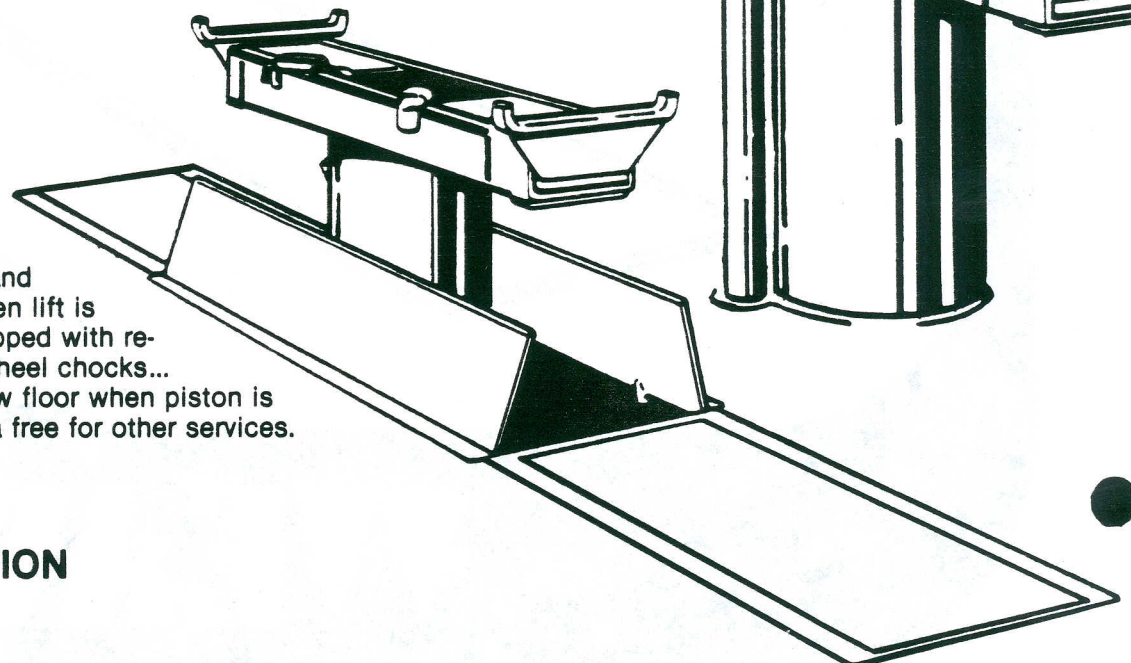
One end inspection and service lifts

Lift either end for fast inspection of suspension...steering...tires...brake lining...exhaust systems...
Air/oil or electric/oil operated...36" stroke, 10-5/8" diameter piston...floor level controls...adjustable adapters
and adapter spotting device...fast lifting and lowering.

- Model EC-193 Air/oil operated, full hydraulic, surface type, 12,000 lb. cap.
- Model EC-194 Elec/oil operated, full hydraulic, surface type, 18,000 lb. cap.
- Model EC-196 Air/oil operated, full hydraulic, recessed type, 12,000 lb. cap.
- Model EC-197 Elec/oil operated, full hydraulic, recessed type, 18,000 lb. cap.



Surface models...saddle and adapters rest on floor when lift is lowered. Recessed...equipped with recessed floor frame and wheel chocks...
saddle and adapters below floor when piston is lowered leaving work area free for other services.



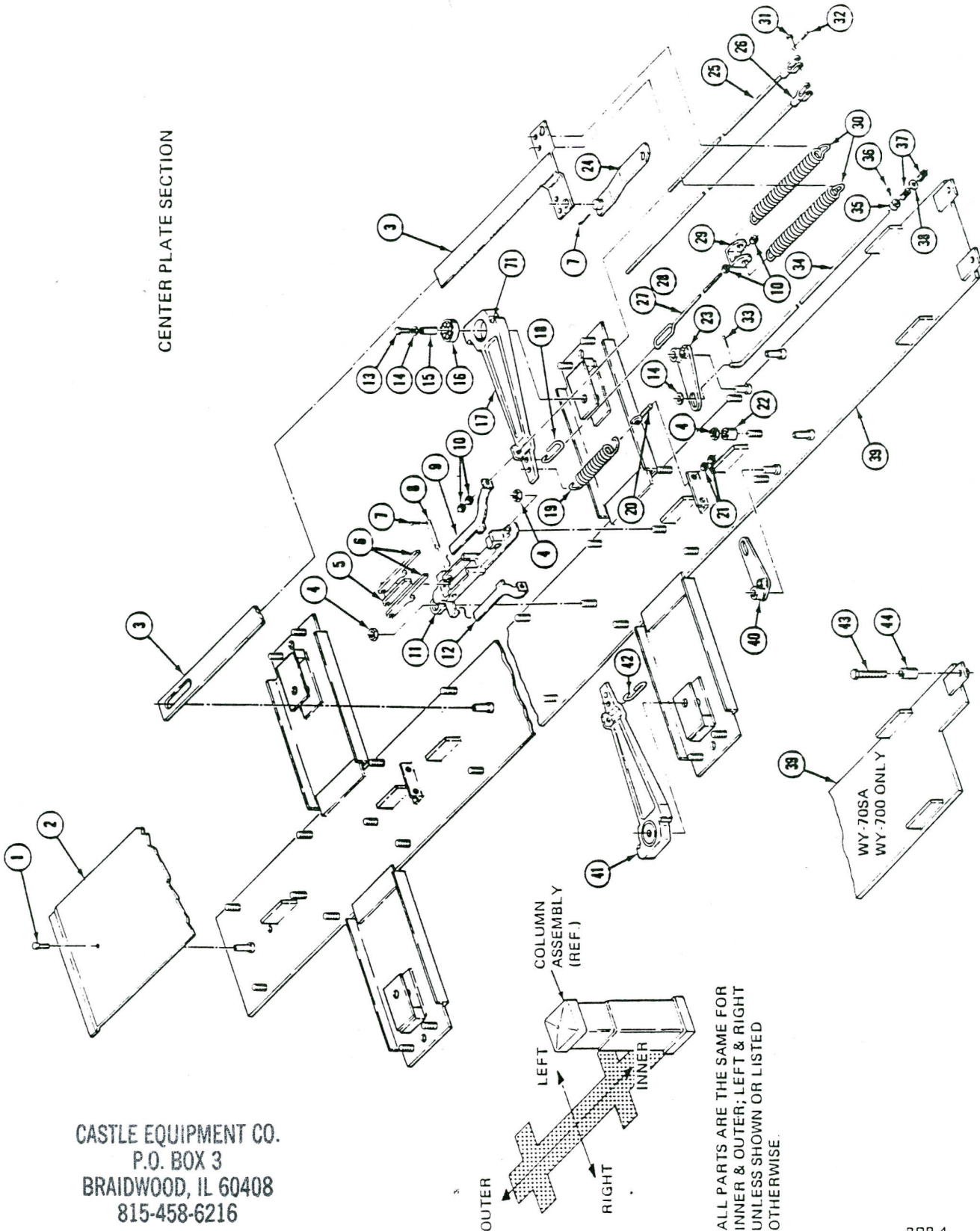
WEAVER®

DURA CORPORATION

FORDS MILL ROAD
PARIS, KENTUCKY 40361
(606) 987-2240

WEAVER

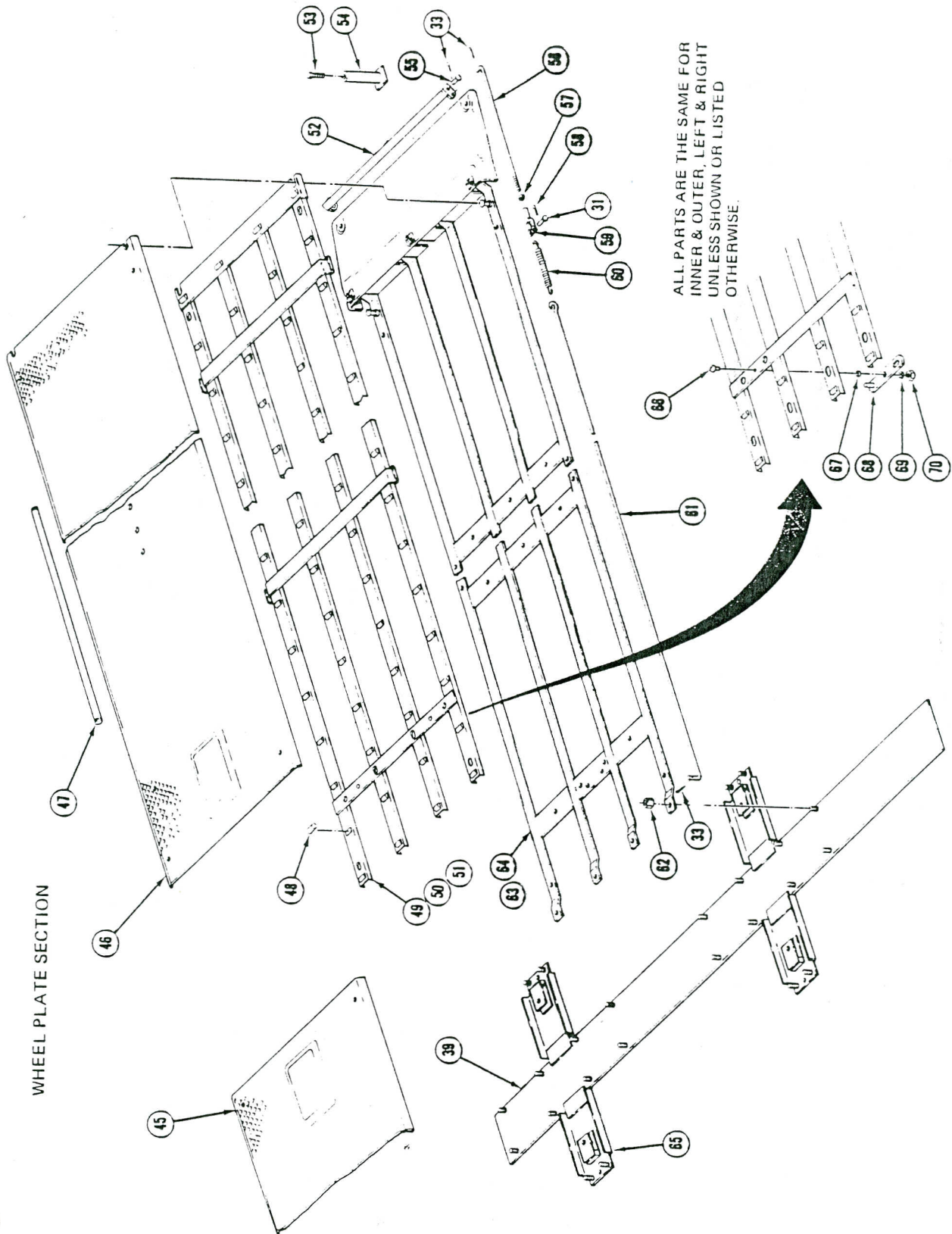
**REPAIR PARTS LIST
BRAKE TESTER FLOOR ASSEMBLY
WY-40SA; WY-70SA; WY-400 & WY-700 SERIES
ORDER ALL PARTS BY PART NUMBER**



CASTLE EQUIPMENT CO.
P.O. BOX 3
BRAIDWOOD, IL 60408
815-458-6216

ALL PARTS ARE THE SAME FOR
INNER & OUTER; LEFT & RIGHT
UNLESS SHOWN OR LISTED
OTHERWISE.

REPAIR PARTS LIST
BRAKE TESTER FLOOR ASSEMBLY
WY-40SA; WY-70SA; WY-400 & WY-700 SERIES
 ORDER ALL PARTS BY PART NUMBER



REPAIR PARTS LIST
BRAKE TESTER FLOOR ASSEMBLY
WY-40SA; WY-70SA; WY-400 & WY-700 SERIES
 ORDER ALL PARTS BY PART NUMBER

REF. NO.	PART NO.	DESCRIPTION
* 1.	S-5786	Hex Hd. Capscrew 1/2-13UNC x 3/4" lg.
2.	AS-19272	Center Cover Plate (WY-40SA & WY-400 ONLY)
	AS-19283	Center Cover Plate (WY-70SA & WY-700 ONLY)
3.	AS-19269	Spring Anchor Bar
* 4.	S-4694	Hex Half Nut 1/2-13UNC
5.	S-6110	Lever Arm Spacer
6.	S-6111	Lock Lever
* 7.	S-275	Cotter 1/8 Dia. x 3/4" lg.
8.	S-1896	Lock Lever Pin
9.	AS-6109	Left Lock Operator
* 10.	S-1878	Hex Nut 1/4-28UNF
11.	1360	Lock Bracket
12.	AS-6108	Right Lock Operator
* 13.	S-12058	Hex Hd. Capscrew 5/16-18UNC x 1/2"
* 14.	S-19957	Washer 11/16 O.D. x 11/32 I.D. x 1/16
15.	S-25029	Lever Pin
16.	S-7915	Ball Bearing
17.	AS-9043	Left Lever Arm—Includes Item 16 & 71
18.	S-20215	Left Spring Link
19.	S-8074	Lever Arm Spring
20.	S-19281	Spring Hanger Bolt
* 21.	S-1921	Hex Nut 1/4-20UNC
22.	S-5964	Bumper
23.	1132	Left Release Bellcrank
24.	AS-19275	Spring Bar Link
25.	AS-4894	Short Pull Rod
26.	AS-4893	Long Pull Rod
27.	S-19278	Spring Rod (Outer)
28.	S-19277	Spring Rod (Inner)
29.	S-19280	Spring Yoke
30.	S-19152	Lever Arm Spring
31.	S-4632	Pull Rod Pin
* 32.	S-4074	Cotter Pin 1/16 Dia. x 3/4" lg.
* 33.	S-6829	Cotter Pin 3/32 Dia. x 3/4" lg.
34.	S-9032	Trip Rod
35.	S-7778	Trip Rod Collar
* 36.	S-4365	Sq. Hd. Screw 1/4-20UNC x 1/2" lg.
37.	S-4211	Spring
* 38.	S-3527	Washer 3/8" I.D.
39.	AS-19264	Center Plate (WY-40SA & WY-400 ONLY)
		Includes Item 65
	AS-23014	Center Plate (WY-70SA & WY-700 ONLY)
		Includes Item 65
40.	1131	Right Release Bellcrank
41.	AS-9042	Right Hand Lever Arm—Includes Item 16 & 71
42.	S-20216	Right Spring Link
* 43.	S-7394	Hex Hd. Capscrew 1/2-13UNC x 3" lg.
* 44.	S-10676	Spool Spacer 1/2" std. Pipe x 1-1/4" lg.
45.	AS-5290	Right Wheel Plate (WY-40SA & WY-70SA ONLY)
	AS-23793	Right Wheel Plate (WY-400 & WY-700 ONLY)
46.	AS-5291	Left Wheel Plate (WY-40SA & WY-70SA ONLY)
	AS-23794	Left Wheel Plate (WY-400 & WY-700 ONLY)
47.	S-4634	Plate Test Lever
48.	S-4565	Roller

BRAKE TESTERS

REPAIR PARTS LIST
BRAKE TESTER FLOOR ASSEMBLY
WY-40SA; WY-70SA; WY-400 & WY-700 SERIES
 ORDER ALL PARTS BY PART NUMBER

REF. NO.	PART NO.	DESCRIPTION
49.	AS-4914	Outer Roller Retainer (WY-40SA & 70SA ONLY)
	AS-23772	Outer Roller Retainer (WY-400 & WY-700 ONLY)
50.	AS-4914	Inner Left Hand Roller Retainer (WY-40SA & WY-70SA ONLY)
51.	AS-23894	Inner Left Hand Roller Retainer (WY-400 & WY-700 ONLY)
51.	AS-4914	Inner Right Hand Roller Retainer (WY-40SA & WY-70SA ONLY)
	AS-23823	Inner Right Hand Roller Retainer (WY-400 & WY-700 ONLY)
52.	AS-4890	Release Bar
*53.	S-24890	Hex Soc. Set Screw 3/4-10UNC x 3/4" lg.
54.	AS-24772	Anchor (Use For Calibration With WY-65)
*55.	S-230	Rivet-Rd. Hd. 5/16 x 1-1/2" lg.
56.	S-6302	Short Release Rod
*57.	S-1863	Hex Nut 5/16-24
*58.	S-1042	Cotter 3/32 Dia. x 5/8" lg.
59.	S-6303	Yoke
60.	S-5275	Spring
61.	S-4920	Long Release Rod
62.	S-19279	Cover Support Nut
63.	AS-4912	Inner Roller Race (WY-40SA ONLY)
	AS-5020	Inner Roller Race (WY-70SA ONLY)
	AS-23784	Inner Roller Race (WY-400 ONLY)
	AS-23973	Inner Roller Race (WY-700 ONLY)
64.	AS-20396	Outer Roller Race (WY-40SA ONLY)
	AS-5020	Outer Roller Race (WY-70SA ONLY)
	AS-23783	Outer Roller Race (WY-400 ONLY)
	AS-23973	Outer Roller Race (WY-700 ONLY)
65.	AS-22757	Lever Arm Plate
*66.	S-302	Rivet 1/4 x 3/8 (WY-40SA & 70SA ONLY)
	S-22773	Hex Soc. Burton Hd. Capscrew (WY-400 & WY-700 ONLY)
67.	S-22700	Pivot Spacer (WY-400 & WY-700 ONLY)
68.	AS-4913	Equalizer Bar (WY-40SA & WY-70SA ONLY)
	AS-22703	Equalizer Bar (WY-400 & WY-700 ONLY)
*69.	S-20109	Washer 11/32 I.D. x 11/16 O.D. (WY-400 & WY-700 ONLY)
*70.	S-22769	ESLOK Locknut 5/16-18UNC (WY-400 & WY-700 ONLY)
71.	S-23948	Arm Thrust Pin

ITEMS NOT ILLUSTRATED

AS-23977	Center Plate Assembly Complete For WY-40SA & WY-400 Includes Items 1 thru 42
AS-23978	Center Plate Assembly Complete For WY-70SA & WY-700 Includes Items 1 thru 44
AS-13854	Lock Assembly Complete Includes Items 5, 6, 7, 8, 9, 11 & 12

NOTES

1. For Replacement Of Floor Frames On WY-70SA & WY-700 Models, Please Consult Factory For Prices and Delivery.
2. Item Numbers With An Asterisk (*) Indicates Standard Hardware and Can Be Purchased Locally.

WEAVER DIVISION
DURA CORPORATION

FORDS MILL ROAD
 PARIS, KENTUCKY 40361



**REPAIR PARTS LIST
BRAKE TESTER COLUMN ASSEMBLY**

WY-25; WY-30; WY-40SA; WY-55; WY-60; WY-70SA; WY-75; WY-76; WY-85; WY-86 SERIES

ORDER ALL PARTS BY PART NUMBER

REF. NO.	PART NO.	DESCRIPTION	REF. NO.	PART NO.	DESCRIPTION
79.	S-13058	Beam	98.	S-4556	Dog Spring
80.	AS-13057	Yoke	99.	1621	Release Lever (See Notes 1, 2 & 3)
81.	S-13064	Pivot Pin		1585	Release Lever (See Notes 4, 5, 6, 7 & 8)
82.	S-13060	Straight Ball Socket	*100.	S-2999	Long Taper Pin #0 x 1-1/2" lg.
83.	S-13061	Left Ball Socket	101.	S-4629	Ratchet Dog Shaft
84.	S-13059	Right Ball Socket	102.	AS-4626	Bracket Ass'y. (See Notes 1, 2 & 3)
85.	S-13066	Ball Lock		AS-8790	Bracket Ass'y. (See Notes 4, 5, 6, 7 & 8)
86.	S-13062	Long Bail Bracket	*103.	S-1892	Hex Nut 1/2-13
87.	S-4821	Clevis	104.	AS-6158	Pedestal Base Plate (See Note 1)
88.	S-13063	Short Ball Bracket		AS-4637	Pedestal Base Plate (See Notes 2 & 3)
89.	AS-23310	Ratchet Sector	*105.	S-4372	Capscrew 1/4-28 x 1/2" lg.
	AS-23311	Ratchet Sector Ass'y. (See Note 9)	106.	S-7726	Trip Rod Bracket
*90.	S-275	Cotter Pin 1/8 x 3/4" lg.	107.	1376	Pully Bracket (See Notes 1, 4, 7 & 8)
91.	S-4631	Sector Shaft	108.	S-6168	Idler Pully Pin (See Notes 1, 4, 7 & 8)
92.	S-4632	Clevis Pin	*109.	S-7870	Rd. Hd. Mach. Screw 10-32 x 1/2" lg. (See Notes 1, 4, 7 & 8)
*93.	S-4074	Cotter Pin 1/16 x 3/4" lg.	110.	S-6180	Idler Pully (See Notes 1, 4, 7 & 8)
94.	S-3047	Spring	111.	S-1090	Tape Spring (See Notes 1, 4, 7 & 8)
95.	S-6182	Trip Hook	112.	S-21015	Eye Bolt (See Notes 1, 4, 7 & 8)
96.	1377	Release Spring Lever	113.	S-4764	Adjusting Nut (See Note 1, 4, 7 & 8)
97.	S-4458	Ratchet Dog			

ITEMS NOT ILLUSTRATED

AS-24900	Brake Tester Fluid (1 qt.)
AS-18540	Rod Arrangement (5 th Tube) Includes Items 76, 77, 78, 79, 80, 81, 82, 83, 84, 85, 86 & 88.
S-22634	Calibrating Shim
AS-20434	Braking Effort Calculator
S-9061	Packing Wrench for use on Item 14
AS-25636	Ratchet Dog & Shaft Ass'y. Includes Items 96, 97, 98, 99, 100 & 101 (See Notes 1, 2 & 3)
AS-25637	Ratchet Dog & Shaft Ass'y. (See Notes 4, 5, 6, 7 & 8)
AAS-19391	Reservoir Oiler Complete
AS-11726	Column Ass'y. Complete (See Note 1)
AS-11728	Column Ass'y. Complete (See Note 2)
AS-11730	Column Ass'y. Complete (See Note 3)
AS-11732	Column Ass'y. Complete (See Note 4)
AS-11733	Column Ass'y. Complete (See Note 5)
AS-11735	Column Ass'y. Complete (See Note 6)
AS-11737	Column Ass'y. Complete (See Note 7)
AS-24969	Column Ass'y. Complete (See Note 8)

NOTES

1. Used on WY-25 Model only.
2. Used on WY-30 Model only.
3. Used on WY-40SA Model only.
4. Used on WY-55 Model only.
5. Used on WY-60 Model only.
6. Used on WY-70SA; WY-75 & WY-85 Models only.
7. Used on WY-76 Model only.
8. Used on WY-86 Model only.
9. Used on Models Equipped with WY-78, 79 or 81.
10. Item Numbers with an Asterisk (*) Indicates
Standard Hardware and can be purchased locally.

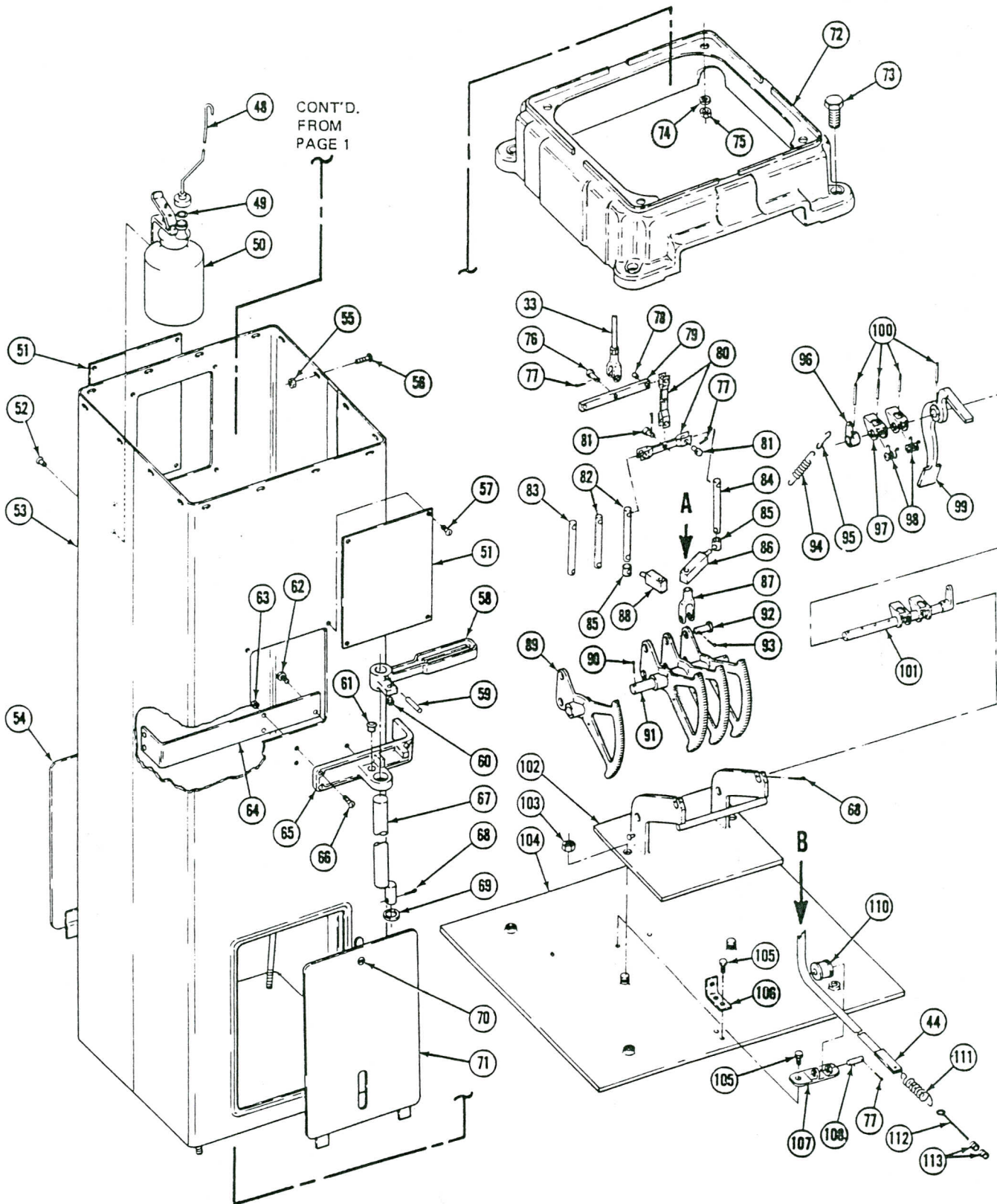
WEAVER
DURA CORPORATION

FORDS MILL ROAD
PARIS, KENTUCKY 40361

TELEPHONE (502) 987-2240

REPAIR PARTS LIST
BRAKE TESTER COLUMN ASSEMBLY
 WY-25; WY-30; WY-40SA; WY-55; WY-60; WY-70SA; WY-75; WY-76; WY-85; WY-86 SERIES

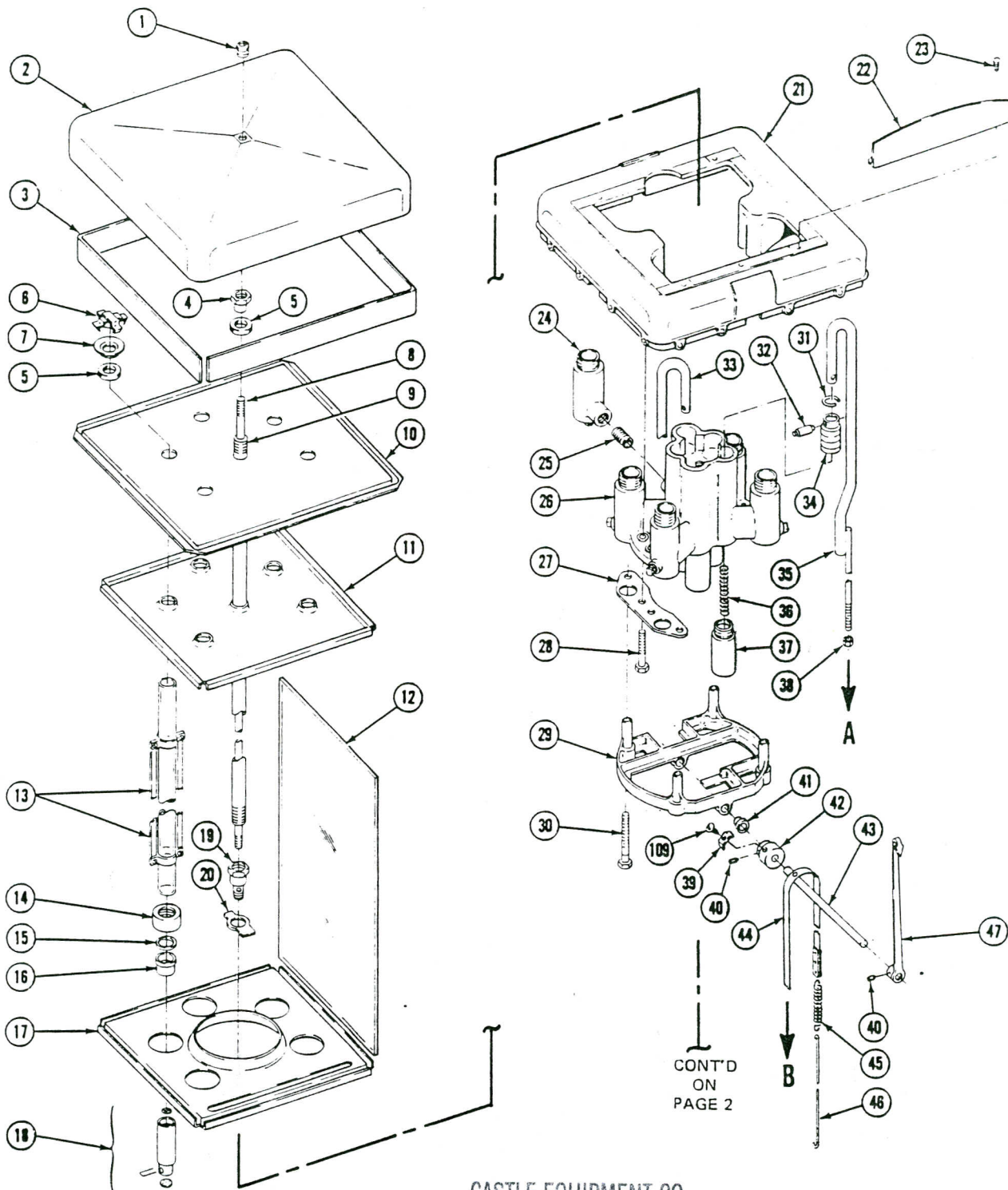
ORDER ALL PARTS BY PART NUMBER



CONT'D.
FROM
PAGE 1

REPAIR PARTS LIST
BRAKE TESTER COLUMN ASSEMBLY
WY-25; WY-30; WY-40SA; WY-55; WY-60; WY-70SA; WY-75; WY-76; WY-85; WY-86 SERIES

ORDER ALL PARTS BY PART NUMBER



BRAKE
TESTERS

CASTLE EQUIPMENT CO.
P.O. BOX 3
BRAIDWOOD, IL 60408
815-458-6216

**REPAIR PARTS LIST
BRAKE TESTER COLUMN ASSEMBLY**

WY-25; WY-30; WY-40SA; WY-55; WY-60; WY-70SA; WY-75; WY-76; WY-85; WY-86 SERIES

ORDER ALL PARTS BY PART NUMBER

REF. NO.	PART NO.	DESCRIPTION	REF. NO.	PART NO.	DESCRIPTION
1.	S-8409	Cap Nut	31.	S-4555	Retainer
2.	S-21554	Cap (For replacement of Cast Cap, Order Items 2, 3, 8 & 10)	32.	S-4659	Plunger Pin
3.	S-22756	Cap Spacer	33.	AS-13074	Short Plunger Rod Ass'y. (See Notes 1, 2 & 3)
4.	S-7469	Retainer Nut		AS-13072	Short Plunger Rod Ass'y. (See Notes 4, 5, 6, 7 & 8)
5.	S-4061	Gasket	34.	Plunger (Not Serviced Separately) Order Item 26.
6.	AS-24887	Deflector Assembly	35.	AS-8082	Plunger Rod Ass'y. (See Notes 1, 2 & 3)
7.	S-18396	Cup		AS-8083	Plunger Rod Ass'y. (See Notes 4, 5, 6, 7 & 8)
8.	S-22766	Hold Down Rod 19-3/8" lg. (For Plastic Cap)	36.	S-7472	Spring
	S-13069	Hold Down Rod 19-7/8" lg. (For Cast Cap)	37.	Spring Well (Not Serviced Separately) Order Item 26.
9.	S-13067	Retainer Tube	*38.	S-4593	Hex Nut 1/4-28
10.	S-21555	Glass Retainer	39.	S-6193	Clamp (See Notes 1, 4, 7 & 8)
11.	S-13054	Upper Glass Retainer	*40.	S-13366	Set Screw 1/4-20 x 1/4" lg. (1, 4, 7 & 8)
12.	S-7473	Glass Panel	41.	S-7868	Bearing (See Notes 1, 4, 7 & 8)
13.	AS-18701	4 Tube & Scale Set 750 lb. Recording	42.	S-15885	Pully (See Notes 1, 4, 7 & 8)
	AS-20726	4 Tube & Metric Scale Set 350 kg. Recording	43.	S-7863	Shaft (See Notes 1, 4, 7 & 8)
	AS-18702	5 Tube & Scale Set 750 lb. Recording	44.	AS-7957	Tape Ass'y. (See Note 1)
		3000 lb. Totalizing		AS-8020	Tape Ass'y. (See Note 4)
	AS-20727	5 Tube & Metric Scale Set 350 kg. Recording		AS-8395	Tape Ass'y. (See Note 7)
		1400 kg. Totalizing		AS-17083	Tape Ass'y. (See Note 8)
	AS-18703	4 Tube & Scale Set 1500 lb. Recording	45.	S-4757	Spring (See Notes 1, 4, 7 & 8)
	AS-20728	4 Tube & Metric Scale Set 700 kg. Recording	46.	S-7956	Spring Hook (See Note 1)
	AS-18704	5 Tube & Scale Set 1500 lb. Recording		S-8019	Spring Hook (See Note 4)
		6000 lb. Totalizing		S-8394	Spring Hook (See Notes 7 & 8)
	AS-20729	5 Tube & Metric Scale Set 700 kg. Recording	47.	AS-7862	Indicator Hand (See Notes 1, 4, 7 & 8)
		2800 kg. Totalizing	48.	AS-19392	Spout Tube Ass'y.
	AS-18705	4 Tube & Scale Set 2000 lb. Recording	49.	S-16062	Gasket
	AS-18706	5 Tube & Scale Set 2000 lb. Recording	50.	AS-19391	Reservoir Oiler
		8000 lb. Totalizing	51.	S-6606	Name Plate
	AS-18707	4 Tube & Dual Range Scale Set 3000 lb., 6000 lb. Recording	*52.	S-6783	Rd.Hd. Mach. Screw 10-32 x 1/4" lg.
		AS-18708	53.	AS-9050	Column (See Notes 1, 2, 4 & 5)
				AS-9051	Column (See Notes 3, 6, 7 & 8)
	AS-.....	5 Tube & Metric Dual Range Scale Set 1400 kg., 2800 kg. Recording 5600 kg., 11200 kg. Totalizing	54.	AS-4690	Rear Cover Door Includes Item 70
		AS-18710	*55.	S-7921	Hex Nut 1/4-20
			*56.	S-6531	Rd. Hd. Mach. Screw 1/4-20 x 1/2" lg.
			*57.	S-4065	Rd. Hd. Sheet Metal Screw 6-32 x 3/8" lg.
			58.	1583	Crank Handle (See Notes 3, 6, 7 & 8)
			*59.	S-108	Taper Pin #0 x 1-1/4" lg. (See Notes 3, 6, 7 & 8)
	AS-20739	5 Tube & Metric Dual Range Scale Set 700 kg., 2800 kg. Recording 2800 kg., 11200 kg. Totalizing	60.	S-7467	Stop Pin (See Notes 3, 6, 7 & 8)
			61.	S-7468	Stop Socket (See Notes 3, 6, 7 & 8)
14.	S-4657	Packing Nut	*62.	S-3876	Capscrew 1/4-28 x 3/4" lg. (See Notes 3, 6, 7 & 8)
15.	S-1940	Washer, Packing Retainer	*63.	S-7483	Hex Nut 10-32 (See Notes 3, 6, 7 & 8)
16.	S-24877	Tube Seal	64.	S-7635	Crank Brace (See Notes 3, 6, 7 & 8)
17.	S-16495	Lower Glass Retainer (See Notes 1, 4, 7 & 8)	65.	1584	Crank Shaft Bracket (See Notes 3, 6, 7 & 8)
	S-13055	Lower Glass Retainer (See Notes 2, 3, 5 & 6)	*66.	S-7482	Rd. Hd. Mach. Screw 10-32 x 3/4" lg. (See Notes 3, 6, 7 & 8)
18.	Inertia Valve Ass'y. (Item Obs.) Service by Installing KB-100 this includes Items 6, 7 & 16)	67.	AS-9035	Shaft Ass'y. (See Note 3)
19.	S-13068	Retainer		AS-7464	Shaft Ass'y. (See Notes 6, 7 & 8)
20.	S-16401	Locator	*68.	S-107	Cotter Pin 1/8 x 1" lg.
21.	1951	Pedestal Head	*69.	S-2252	Washer (See Notes 3, 6, 7 & 8)
22.	S-7859	Dial	70.	AS-23424	Latch Ass'y.
	S-15219	Dial (Metric) (See Notes 1, 4, 7 & 8)	71.	AS-4638	Front Cover Door Ass'y., Includes Item 70.
*23.	S-7430	Rd. Hd. Mach. Screw 6-32 x 1/4" lg.	72.	1619	Base (See Notes 1 & 2)
24.	1950	Valve Housing		1704	Base (See Note 3)
*25.	S-2241	1/4" Close Nipple Extra Heavy		1627	Base (See Notes 4, 5, 6, 7 & 8)
26.	KB-102	Cylinder Head Ass'y. 5 Tube, Includes Items 6, 7, 14, 15, 16, 19, 20, 24, 25, 26, 31, 32, 34, 36, & 37.	*73.	S-105	Capscrew 3/8-16 x 1" lg. (See Notes 1, 2 & 3)
	KB-103	Cylinder Head Ass'y. 4 Tube Components Similar to KB-102		S-266	Capscrew 1/2-13 x 1-1/2" lg. (See Notes 4, 5, 6, 7 & 8)
27.	S-15886	Bracket (See Notes 1, 4, 7 & 8)	*74.	S-1882	Lockwasher 5/16"
*28.	S-2889	Capscrew 5/16-18 x 1-1/2" lg.	*75.	S-1921	Hex Nut 5/16-18
*29.	2037	Frame (See Notes 1, 4, 7 & 8)	76.	S-13065	Long Pivot Pin
30.	S-7904	Capscrew 1/4-20 x 3" lg. (See Notes 1, 4, 7 & 8)	*77.	S-1892	Cotter Pin 1/16 x 3/8" lg.
			78.	S-9202	Bearing

BRAKE TESTER